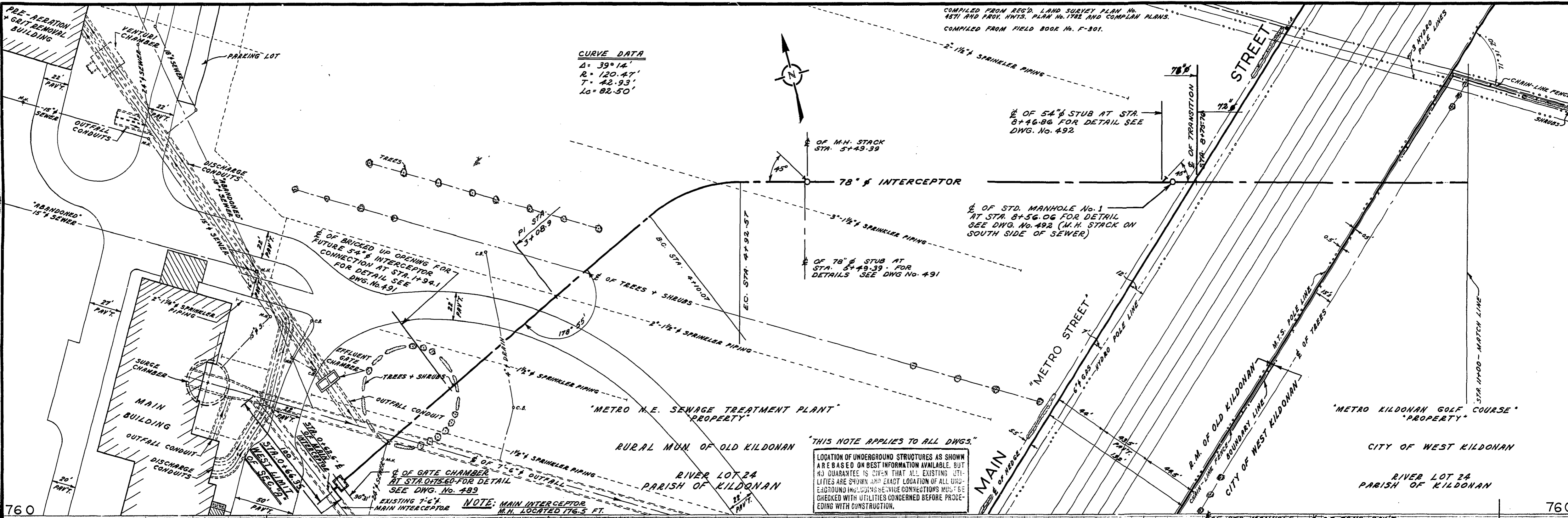
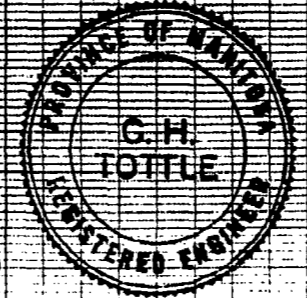
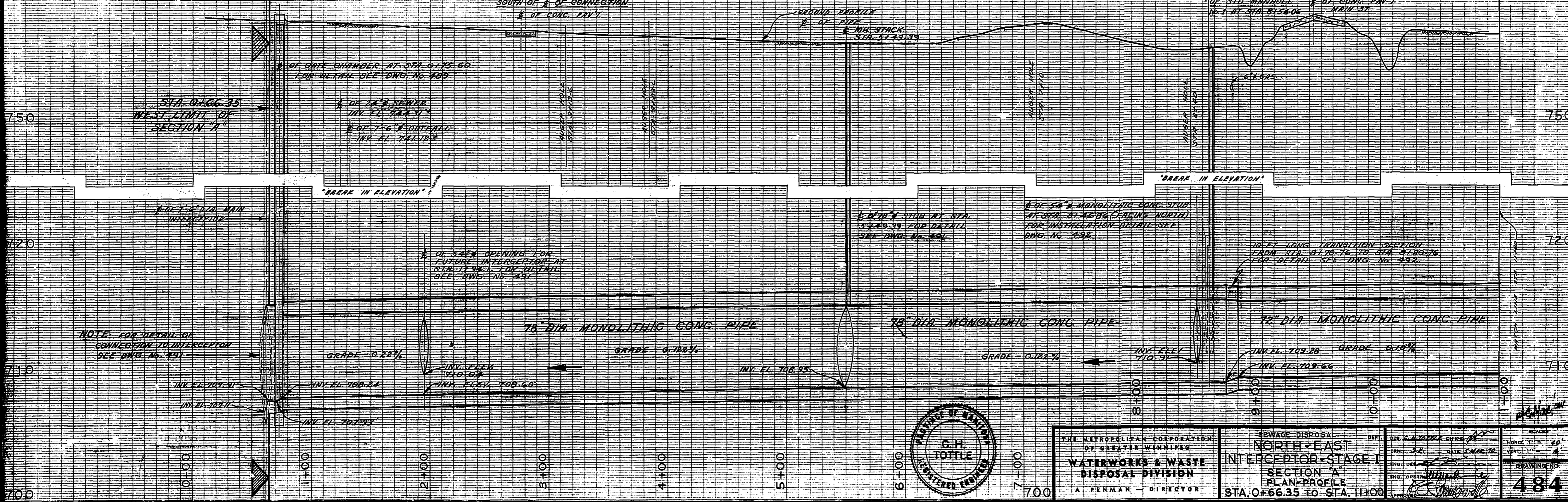


COMPILED FROM REG'D. LAND SURVEY PLAN No. 1871 AND PROJ. HWS. PLAN No. 1702 AND COMPLAN PLANS.
COMPILED FROM FIELD BOOK No. F-301.

CURVE DATA
 $\Delta = 39.14'$
 $R = 120.47'$
 $T = 42.93'$
 $Lc = 82.50'$



"THIS NOTE APPLIES TO ALL DWGS."
 LOCATION OF UNDERGROUND STRUCTURES AS SHOWN ARE BASED ON BEST INFORMATION AVAILABLE, BUT NO GUARANTEE IS GIVEN THAT ALL EXISTING UTILITIES ARE SHOWN AND EXACT LOCATION OF ALL UNDERGROUND INCLUDING SERVICE CONNECTIONS MUST BE CHECKED WITH UTILITIES CONCERNED BEFORE PROCEEDING WITH CONSTRUCTION.



THE METROPOLITAN CORPORATION
 OF GREATER WINNIPEG
**WATERWORKS & WASTE
 DISPOSAL DIVISION**
 A. PENMAN - DIRECTOR

SEWAGE DISPOSAL
**NORTH-EAST
 INTERCEPTOR-STAGE I
 SECTION 'A'**
 PLAN-PROFILE
 STA. 0+66.35 TO STA. 11+00

SURVEYED & BEAN CHECKED
 BY: [Signature]
 APPROVED AS BUILT
 BY: J.D. OS
 8/28/72

DRAWING NO. **484**